

Andres Castañeda – GM Mark Paragua

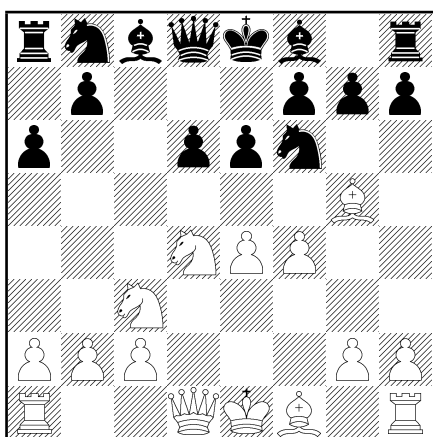
Bradley Open Tournament 2007

First Game with a GM

This is the first game that Andres played against a GM in a tournament. It seems that at the end of the game both players were happy sharing the point but Andres had a forced win.

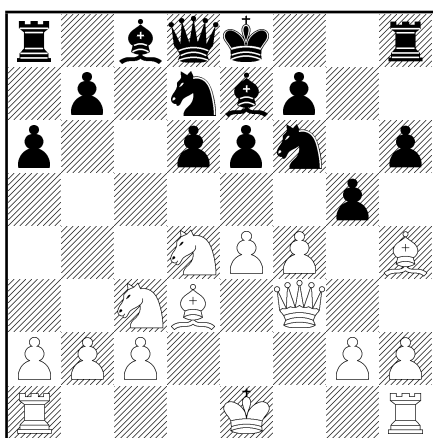
SICILIAN DEFENSE

- | | | |
|----|--------|--------|
| 1. | e2-e4 | c7-c5 |
| 2. | ♘g1-f3 | d7-d6 |
| 3. | d2-d4 | c5×d4 |
| 4. | ♘f3×d4 | ♘g8-f6 |
| 5. | ♘b1-c3 | a7-a6 |
| 6. | ♙c1-g5 | e7-e6 |
| 7. | f2-f4 | |



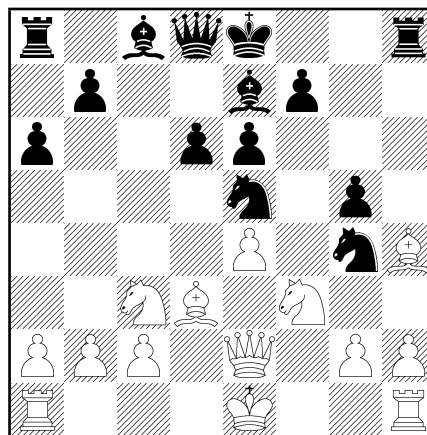
This is a well known position

- | | | |
|-----|--------|--------|
| 7. | ... | ♙f8-e7 |
| 8. | ♙d1-f3 | h7-h6 |
| 9. | ♙g5-h4 | ♘b8-d7 |
| 10. | ♙f1-d3 | g7-g5 |



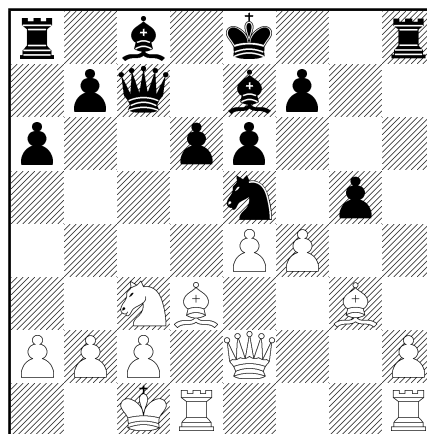
A typical move with the aim of securing the e5 square for the knight.

- | | | |
|-----|--------|--------|
| 11. | f4×g5 | ♘d7-e5 |
| 12. | ♙f3-e2 | ♘f6-g4 |
| 13. | ♘d4-f3 | h6×g5 |



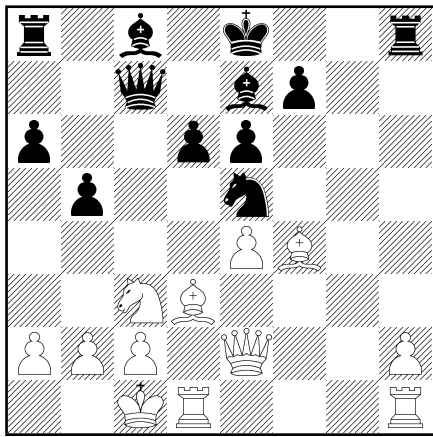
Black recovers the pawn

- | | | |
|-----|--------|--------|
| 14. | ♙h4-g3 | ♘e5×f3 |
| 15. | g2×f3 | ♘g4-e5 |
| 16. | 0-0-0 | ♙d8-c7 |
| 17. | f3-f4 | |



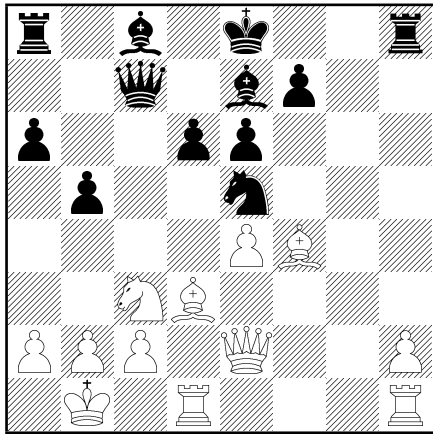
Well played. This guarantees a passed pawn for white on the h file.

- | | | |
|-----|--------|-------|
| 17. | ... | g5×f4 |
| 18. | ♙g3×f4 | b7-b5 |



Black starts a natural counterattack on the queen side. The drawback of this plan is that the black king will be exposed.

19. ♔c1-b1



Played after long thinking, this move is a mistake because it allows black to attack the knight that has no good moves. As pointed out by Andres "maybe it is important here to move the queen to give the knight the e2 square.. if h4, black need not take but can play b4 to misplace the knight."

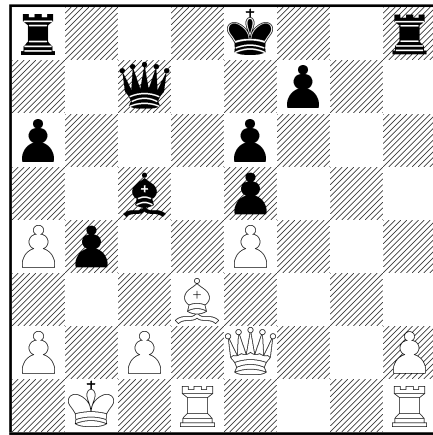
19. ... b5-b4
 20. ♘c3-a4 ♙c8-d7
 21. b2-b3

A sad necessity. Black could have now won the a pawn creating good conditions for attack in the queen side.

21. ... ♙d7×a4
 22. ♙f4×e5

White aims at bishops of opposite colors.

22. ... d6×e5
 23. b3×a4 ♙e7-c5

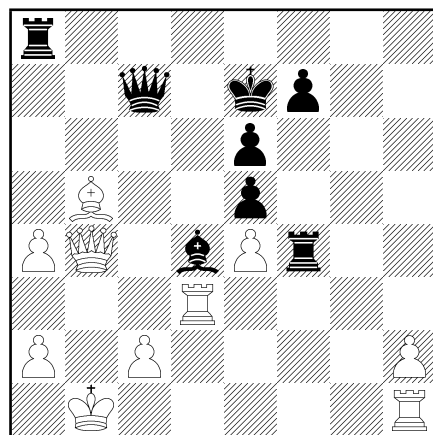


Black overestimates his possibilities of attack through the black squares not noticing that white, capturing at a6, creates as well good looks for attack at the black king.

24. ♙d3×a6 ♙c5-d4
 25. ♙a6-b5 ♔e8-e7
 26. ♖d1-d3

Stopping the attack through the black squares. White position is secure and the next black's move gives away the important b pawn.

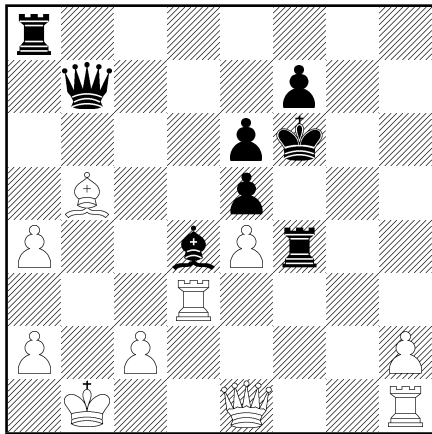
26. ... ♖h8-h4
 27. ♗e2-e1 ♖h4-f4
 28. ♗e1×b4



28. ... ♔e7-f6
 29. ♗b4-e1

Excellent move directing the queen towards the king side at the same time providing extra defense for the back rank.

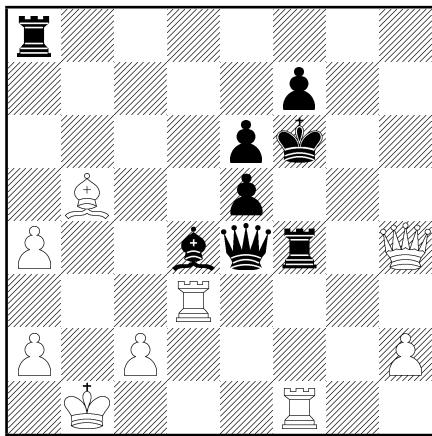
29. ... ♗c7-b7



With the threats 30 ... ♖a4 and 30 ... ♜e4.
30. ♖h1-f1!

This move defends a4 and at the same time prepares the road for the queen to attack the black king. If now 30 ... ♖a4 then 31. ♜h4, ♔g7; 32. ♜g3, ♕f8; 33. ♜d8 mate.

30. ... ♜b7×e4
31. ♜e1-h4



31. ... ♔f6-g7

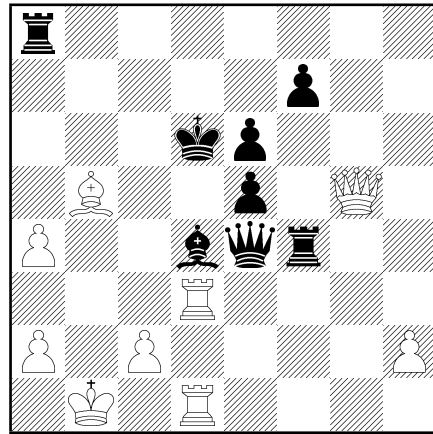
As noted by Sofia Leja, 31. ... ♔f5 loses to 32. ♜df3, ♜f3; 33. ♜e4, ♕e4; 34. ♙c6, ♕f5; 35. ♜f3 and white wins a whole rook.

32. ♜h4-g5 ♔g7-f8
33. ♜g5-h6 ♕f8-e7
34. ♜h6-g5 ♕e7-d6

Black avoids draw by repetition but enters a dangerous territory with his king.

35. ♜f1-d1

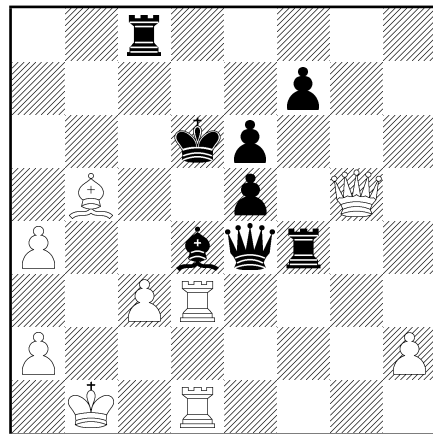
To play 36. c3.



35. ... ♜a8-c8

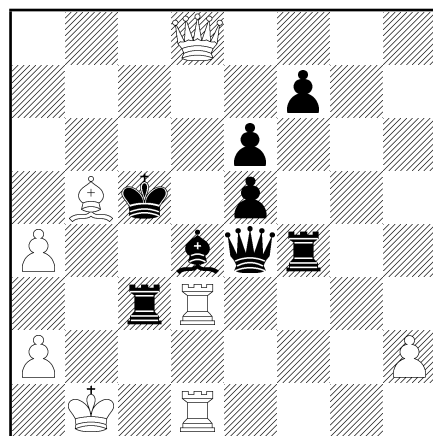
To stop 36. c3 but ...

36. c2-c3



White plays c3 anyway, sacrificing the c pawn for the possibility of attacking with the queen from the back.

36. ... ♜c8×c3
37. ♜g5-d8 ♕d6-c5



In this position white settled with a draw by repetition but had two winning variations not so easy to see when an expert is playing a GM for the first time in a tournament! 38. a3, ♖b3; 39. ♔c1 is one way and the other is 38. ♗a5.
Draw.